

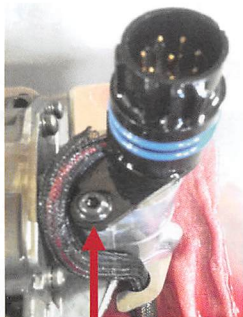


119 N Main Street
St Lucas, IA 52166
(563) 773.2719

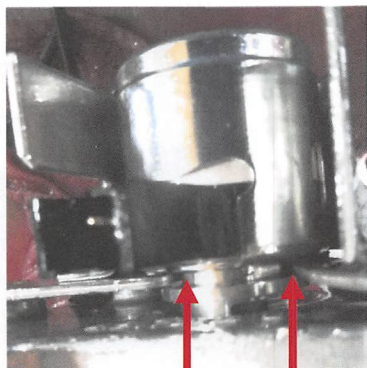
Valve Body

Installation Instruction Guide

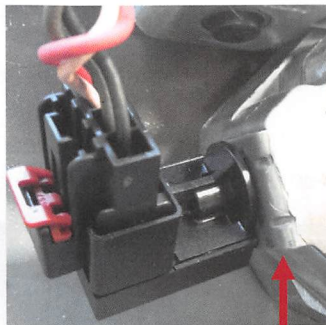
Valve Body Electronics:



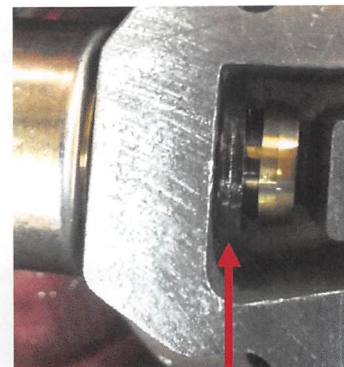
Attach 8-pin connector to 3-4 accumulator housing with T-25 shoulder screw



Be sure governor solenoid bracket goes into the outer most groove of the solenoid for proper installation



Plastic sensor is held in with the governor bracket



Steel sensor is held into the block with steel clip

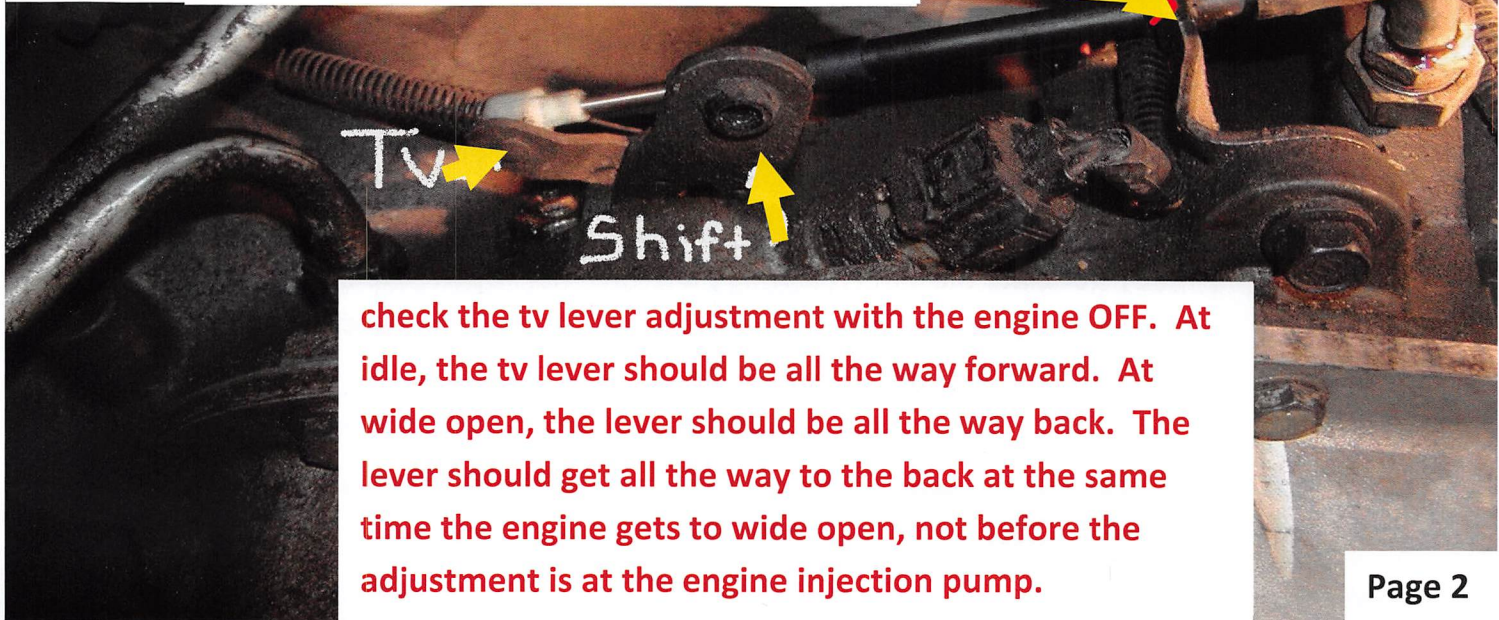
WITH VEHICLE SECURED SO IT CANNOT MOVE

From inside the cab, move the shift lever to the low position from under truck on drivers side, loosen tv lever and shift lever clamp bolts with a 7/16 wrench or socket.

With a pair of screw drivers, gently pry the shift lever and tv lever up and off of the shaft.

Slightly above and to the rear of the shift levers, remove the 3 wire connector (RH 1994-1995) or the 8 wire connector (RH 1996 and up).

You can also bend this bracket slightly if there is NOT enough adjustment at the engine adjuster



check the tv lever adjustment with the engine OFF. At idle, the tv lever should be all the way forward. At wide open, the lever should be all the way back. The lever should get all the way to the back at the same time the engine gets to wide open, not before the adjustment is at the engine injection pump.

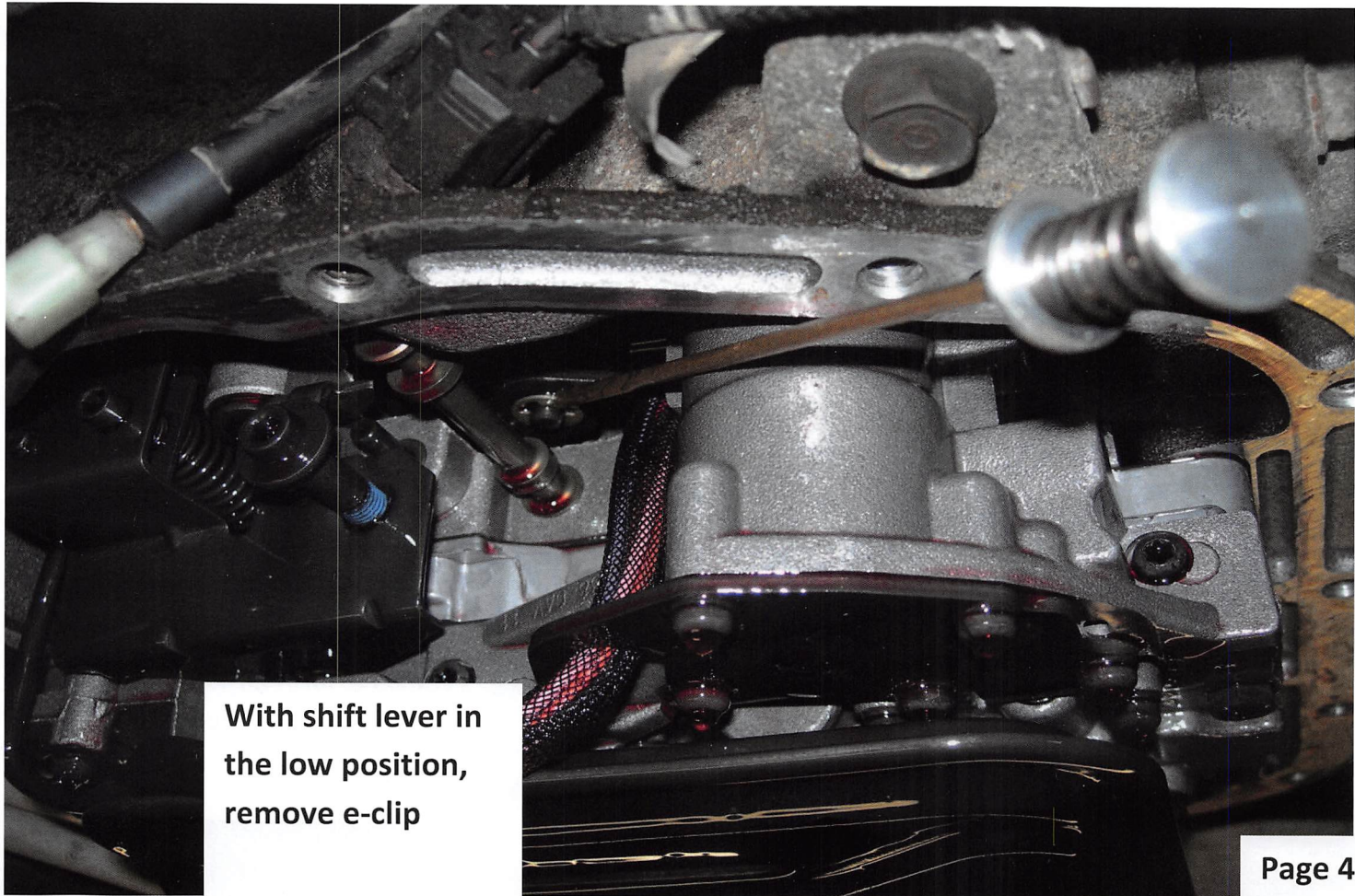
When reinstalling the valve body, make sure the TV lever is fully seated on the shaft. The shaft must stick out above the lever when properly installed.

Disconnect wire harness by squeezing tabs on front & back of connector, then wiggle and pull up to release connector

With linkage rod disconnected from this lever, move lever all the way forward, then loosen both blue headed bolts and gently pry both levers up and off.

Move this lever all the way forward before removing lever from trans.

With the trans pan off and the valve body bolts removed, push this connector down through the trans case, DON'T pull the connector through the case with the valve body or the connector may break.

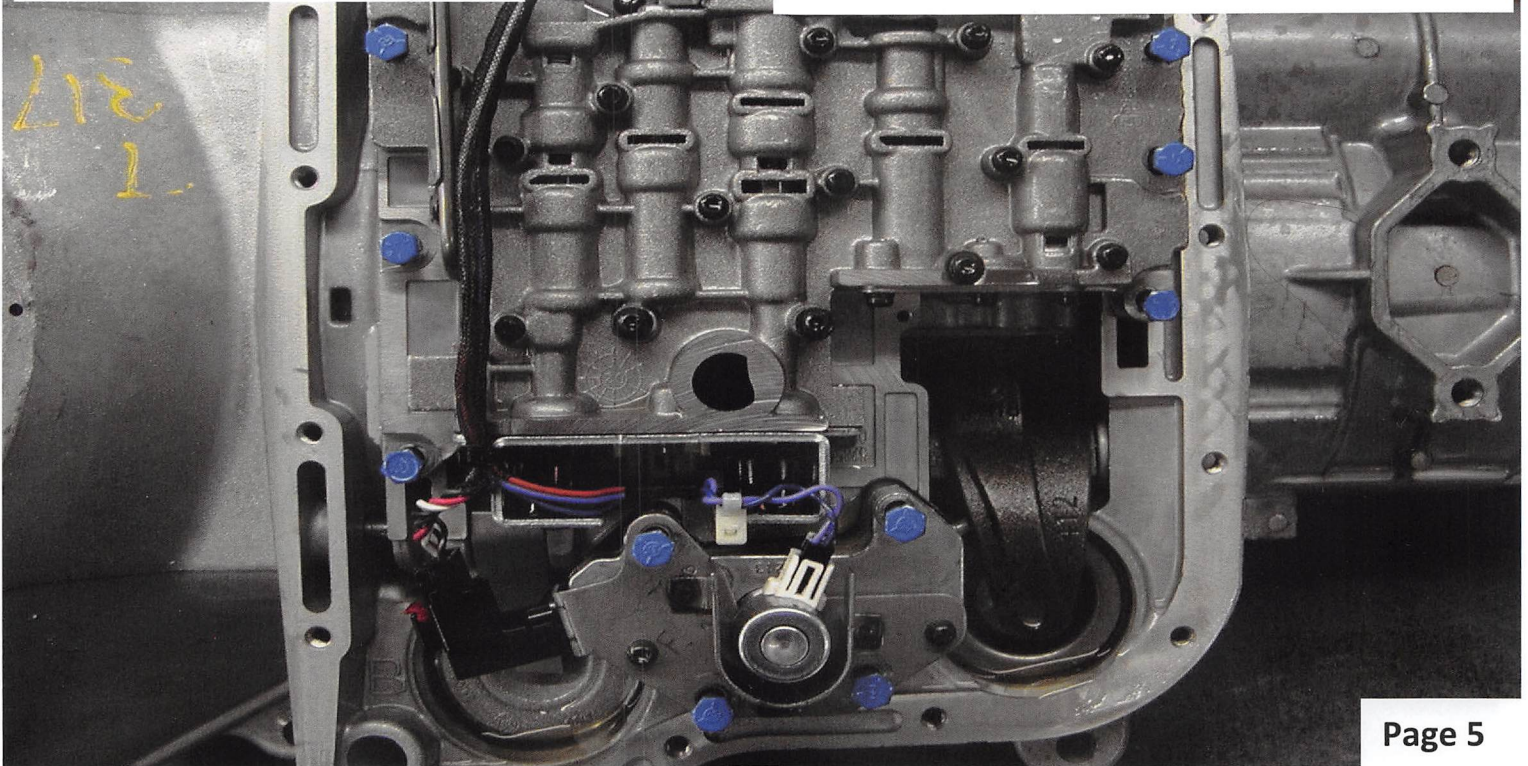


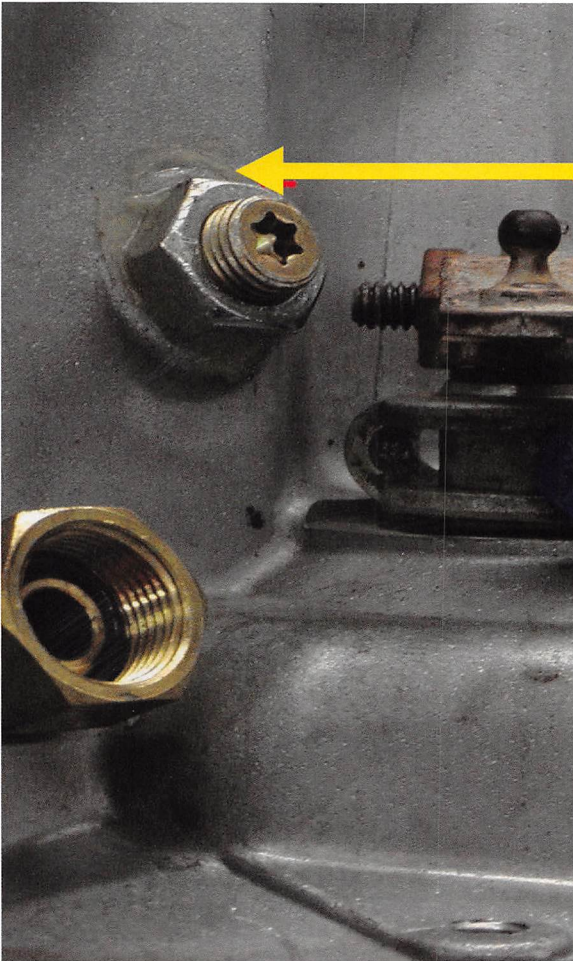
With shift lever in the low position, remove e-clip

Remove 10 blue painted bolts (yours will not be painted) then lower valve body and remove e-clip



With vb reinstalled, check that shift lever moves freely from outside of trans case, loosen blue bolts and reposition vb if necessary.





Loosen & remove the $\frac{3}{4}$ " locknut, then with a SHORT $\frac{5}{16}$'s wrench or 40mm torx bit, snug the adjustment screw and back off $2 \frac{1}{4}$ turns.

While holding that adjustment, reinstall locknut & tighten to case.

1. Remove this pin from the front

2. Install new 1-2 lever

Trans MUST be OUT of truck to install this lever

CAUTION: If this piston is installed upside down, the rear band will be destroyed as soon as the trans shifts to 3rd gear !

Heavy Inner servo spring installs WITH the original, you can carefully use a large "C" clamp and socket, or Goerend Servo Compressor Tool

There are no changes to the accumulator piston or spring, but it may fall out when you remove the valve body. Reinstall with the SMAL SEAL into the trans case first then the spring.



Make sure this tv cable is connected to the tv lever, then with the engine off, make sure the lever goes all the way back with the engine at wide open. Failure to check and adjust will damage trans. Notice return spring location.

ROOSTER COMB REMOVAL INSTALLATION INSTRUCTIONS

1. Shift Rooster Comb to manual low position as shown
2. Remove “E” clip from TV Lever with a small flat screwdriver – discard used “E” clip and washer
3. Place hand over detent ball – when the rooster comb is removed, the ball & spring will shoot out of the bore
4. Pull up on the rooster comb shaft, rotating backing and forth may be necessary due to corrosion on the external portion of the TV Lever
DO NOT USE EXCESSESIVE FORCE OR POUND ON THESE PARTS AT ANY TIME – damage to the main casting may result in loss of core refund
In extreme situations of corrosion or a bent TV Lever shaft – the TV lever may have to be destroyed to allow safe removal of the rooster comb.
5. After the rooster comb is removed, the TV lever can be worked out around the blue lock-tite adjustment screw. Remove the manual valve from bore & place these parts in a bag to be returned with the core
6. Remove & discard TV lever shaft seal from rooster comb, clean rooster comb. A wire wheel may be used to remove rust from the external portion of the rooster comb.

To follow video instructions go to:

<https://www.youtube.com/watch?v=2hPhF6mu-TA> OR <http://bit.ly/2Er17Fc>



OR SCAN:

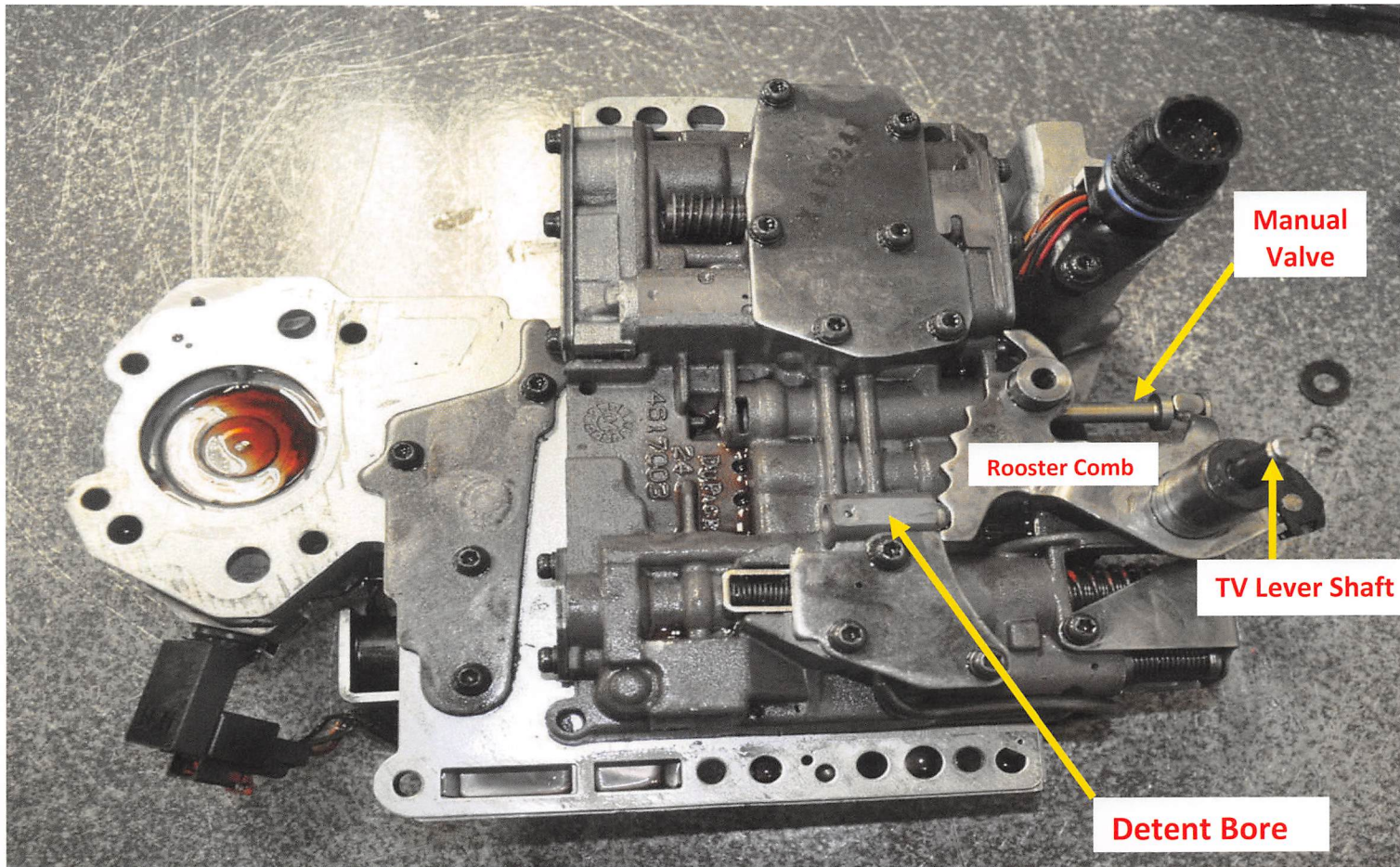
(see next page for rooster comb installation instructions)

ROOSTER COMB INSTALLATION ON TO NEW VALVE BODY

1. Install new TV Lever shaft seal
2. Place manual valve in bore. Using only the rooster comb, rotate the manual valve to the Manual Low position. Remove rooster comb.

BE SURE THE MANUAL VALVE DOES NOT MOVE DURING THE NEXT STEPS

3. Bring the TV Lever up through the casting and around the blue adjustment screw.
4. Place the Detent Bullet in its bore
5. While holding the TV Lever from underneath with one hand, begin to install the Rooster Comb over the TV lever and into the casting
6. Rotate the Rooster Comb to the Manual Low position while it is still above the manual valve and detent bullet. Depress the bullet with one hand and press the rooster comb into place with the other.
7. The TV Lever shaft seal may have been pushed out of place during this process. While holding up on the lever from underneath and down on the Rooster Comb from the top, press the TV Lever seal into place with a dull object to prevent damage to the seal
8. The “E” clip groove on the TV Lever shaft should be visible – Install new washer and “E” clip



Manual Valve

Rooster Comb

TV Lever Shaft

Detent Bore